



## ELEVATING WORK PLATFORMS



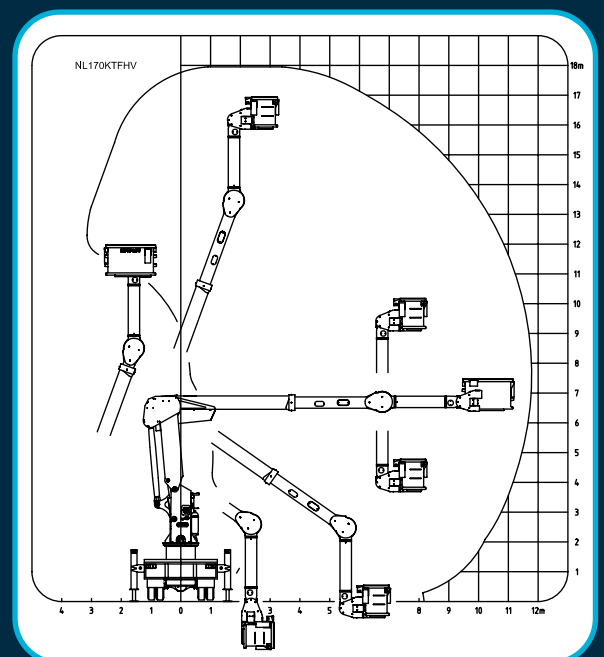
NL170KTF

# NL170KTF

Working Height	18m*
Basket Floor to Ground	16m*
Rated Capacity	350kg**
Maximum Reach	11.8m
Distance to Front Basket	11.3m
Fly Travel	180°
Basket Rotation	180°

\* ( Depending on truck chassis height

\*\* (with optional 1500mm wide basket).



t + 61 3 9725 0077  
f + 61 3 9725 0044  
sales@nifty-lift.com.au

[www.nifty-lift.com.au](http://www.nifty-lift.com.au)



# NLI70KTF

## Elevating Work Platform

### Specification

#### Type

Double boom articulated with telescopic upper boom, and fly boom. Capable of continuous rotation in either direction.

#### Suitable Vehicles

Minimum 15 tonne GVM, depending on required payload. Suitable for 4x2, 6x4 and 6x6 chassis.

#### Platform Height

18m nominal working height. 16m nominal basket floor height (depending on truck chassis height).

#### Telescopic Extension

2.3m.

#### Travelling Height

4.1m on average 15 tonne GVM chassis.

#### Radius of Operation

11.3m to outside edge of basket at 6.1m basket floor height. Maximum reach 11.8m.

#### Rated Capacity

350kg standard depending on options fitted, chassis GVM, and type of stabilisation.

#### Zero Tail Swing

Interlocked bottom boom optional.

#### Fly boom

Capable of 180 rotation (ie. from vertical down to vertical up).

#### Slewing

Ball bearing slew ring, hydraulic and electric swivel couplings offered as standard equipment, offering 360 degree continuous slew. Automatic spring applied, hydraulically released slew brake standard.

#### Main Frame

Constructed from high tensile steel tubing to form a rigid base for the platform and stabiliser attachment points.

#### Stabilisation

Two pair of vertical hydraulic stabiliser legs with self aligning foot pads

standard. Capable of lifting the full GVM of the truck. Approximately 400mm ground penetration. 'Out and down' stabilisers available where required for stability. Optional limited slew interlock in conjunction with 'out and down' stabiliser legs.

#### Tray body

Heavy duty aluminium tray body as standard. Steel chequer plate tray body optional. Tray access and basket access handrails standard. Pedestal and truck gearbox inspection access standard.

#### Controls

Non-insulated, low voltage insulated, and high voltage insulated platforms fitted with proportional electric or radio remote controls. Dual radio remote control available.

#### Emergency

Emergency base controls are provided at the turret. These controls can be used in conjunction with PTO/pump, accumulator or optional emergency electric power pack. Emergency hand pump standard.



## Basket

Optional basket sizes 1200 x 600 or 1500 x 700 (inside) x 1000 high. Constructed from fire retardant FRP with UHMWPE protective handrail for insulated platforms. Steel basket and handrail construction for non-insulated platforms. Safety harness anchors fitted. Heavy duty vinyl basket covers available for FRP baskets. Controlled descent devices optional.

## Basket Slew

High capacity basket rotator, capable of 180 degree rotation.

## Basket Liner

Optional basket liner available featuring dual internal steps and external return lip to prevent debris and water ingress."

## Insulation

Low Voltage or High Voltage insulation complying with Australian Crane Code AS1418.10. High Voltage insulation comprising 33kV FRP insert in lower boom and 132kV FRP insert in fly boom.

## Electrical Testing & Insignia

In accordance with AS1418.10.

## Hydraulic System

Motion of each boom and slew is independently hydraulically controllable. Fully proportional main control valve. Power Take Off (PTO) or optional auxiliary engine power.

Main hydraulic tank incorporates a drain cock and isolating ball valve to facilitate maintenance, and a level/temperature gauge. Pressure gauge to system. All cylinders are double acting. Closed circuit hydraulic system with accumulator.

All cylinders and slew motor fitted with holding valves. Manual bleed down to lift cylinders optional. Hydraulic tool circuit with outlets to basket and/or tray available.

## Electrics

12V or 24V electrical system depending on cab chassis. CANbus control standard. Auxilliary batteries and charge systems available.

## Interlocks

Boom and stabiliser legs interlocked to prevent operation of boom without stabilisers engaged, and prevent operation of stabilisers when boom lifted. Basket and boom tie downs. PTO automatically disengages prior to truck driving.

Optional interlocks- limited slew with 'out and down' stabilisers, bottom boom touch potential, 'Out of level' shutdown.

## Warning Indicators

Colour push button operator screen to cab with operator instructions and warning indicators. Indicators include PTO engaged, Boom 'not stowed', 'Stabilisers' not stowed, Emergency Stop activated, System charging, Accumulator charged, Booms and basket not stowed, Boom and basket not tied down, Travel height, standard.

Stabiliser Ground Sense, Access Steps 'not stowed', Locker Door Open, Radio Remote Active, Hydraulic Tools Active, High pressure and return filters clogged, Vice 'not stowed', 'Out of level', all available.



## Level Indicators

Camber indicators standard. 'Out of level' alarm and interlock available.

## Painting

All metal surfaces abrasion blasted and prime coated. All metal surfaces painted with two pack spray paint system or powder coated. High voltage FRP inserts flow coated and polished.

## Standard colour

White.

## Manuals

Two copies of operation, spare parts, and repair manuals supplied standard. Additional hard or soft copies available.

## Testing

All platforms are tested in accordance with AS1418.10 before release from factory, and test certificate/s issued.

## Accessories

Numerous optional accessories can be supplied. See separate options information.

## Spare Parts

Full range of spare parts available.

## Model Details

- NL170KTF-NI (Non insulated)
- NL170KTF-LV (Low Voltage insulated)
- NL170KTF-132/33  
(132kV insulation, 33kV bottom boom insert- Glove and Barrier)

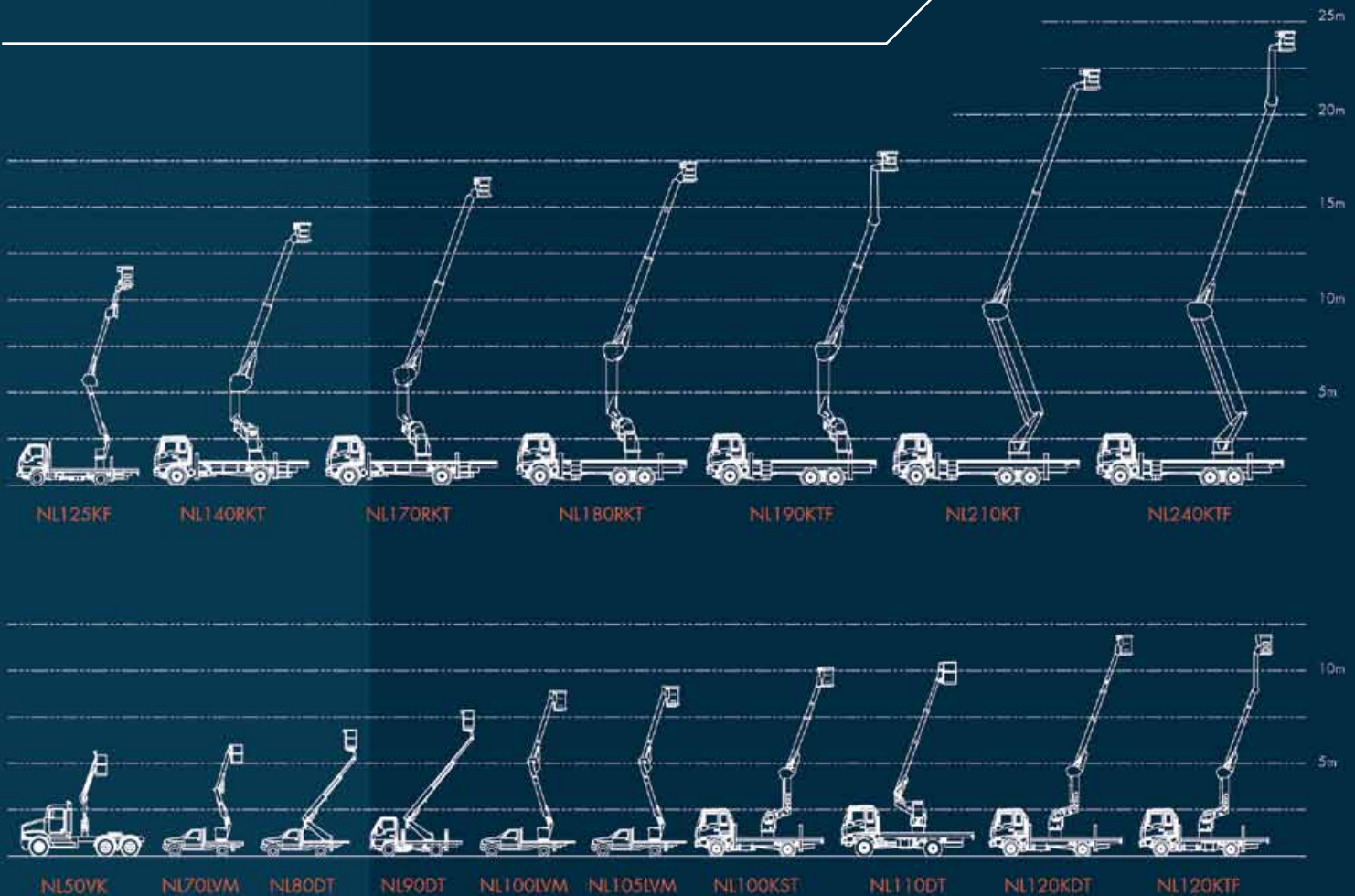
NiftyLift reserves the right to alter specifications without notice.



**ELEVATING  
WORK PLATFORMS**

[www.nifty-lift.com.au](http://www.nifty-lift.com.au)

Don't forget to check out the rest  
of the Nifty-Lift range!



Boucher & Boucher Pty Ltd T/A

**NIFTY-LIFT**

ABN 32 050 197 218

t + 61 3 9725 0077  
f + 61 3 9725 0044

42B Orchard Street Kilsyth Vic. 3137  
P.O. Box 481 Kilsyth Vic. 3137

sales@nifty-lift.com.au  
[www.nifty-lift.com.au](http://www.nifty-lift.com.au)